



DRILLING | SAWING | CUTTING

DRILLING

SAWING

CUTTING

CONTROLLED DEMOLITION

Introduction

CORECUT Engineering is one of the business leader specialized in D.S.C. (Drilling, Sawing, Cutting) deriving its professional outlook and fine legacy since 1995. Our highly skilled and certified operations team has executed many projects with precision over the years. We are committed to continue serving our customers and project partners seamlessly.

From concept to reality, we integrate our global competencies and skills with innovative techniques, field knowledge, regional aesthetics and cultural sensitivity. All of which allows us to provide timely selection and deployment of hosting faculties, to fast track any turnkey projects. Our flawless project management phase has continuously proven to yield high quality delivery that always exceeds our client's expectation.

Our History



DRILLING – Year 1998

Our strive for innovation beyond ordinary rewarded hydraulic drilling system with in 3 years of establishment. Probably the first hydraulic drilling system in the U.A.E. An updated version of this machine was recently used for an ENOC project in combination with latest deep drilling system to execute 900mm \varnothing x 3.5 meters deep cores in various locations in JAFZA.



SAWING – Year 1996

This photo was taken during the diamond wire saw training session by principal company HYDROSTRESS – Switzerland. Thanks to our in-house machine maintenance team keeping the machine still operational. This particular machine was recently used in Saadiyat Bridge – No 51 cutting and removal of bridge project.



CUTTING – Year 1999

Under water cutting, we have privilege to avail our project partners by extending our fleet to underwater cutting systems. Photo demonstrating titanic wire storage system, executing 26 square meters of wire sawing in one go.

Fields we serve

Civil | Infrastructure | Marine | Interior | Oil & Gas | Tarmac Area |
Process Plant

DRILLING

WET-DRY | ELECTRICAL-HYDRAULIC

Diamond core drilling is a precision and effective method solution to create round openings in hard concrete.

We offer full range of drill systems from 12mm diameter to unlimited size and diameter by stitch coring method.

A. Standard core drilling

- 12mm to 1000mm \varnothing
- Precision drilling
- Electric and hydraulic systems for variable applications

B. Stitch core drilling

- 500mm to 2500mm \varnothing
- Square openings
- No limit to the size and depth

C. Deep drilling system

- Special project service for extreme depth
- Core catcher to secure core in the barrel
- System components as below



System components:



SAWING

Electrical | Hydraulic | Hi frequency

- A. Wall sawing
- B. Wire sawing
- C. Chain sawing
- D. Multiple sawing

- ✓ CERTIFIED MACHINES
- ✓ CERTIFIED OPERATORS
- ✓ INSPECT & SAFETY CERTIFIED



SAWING

Electrical | Hydraulic | Hi frequency

We offer full range of diamond sawing service from 125mm ø to 1600 ø blade, Achieving small precision groove to 650mm depth.

Machines Manufactures

- Weka – Germany
- Diaquip – UK
- Husqvarna – Sweden
- Tyrolit – Austria
- Hilti – Germany

A. Wall Sawing

Wall sawing machines are extremely sturdy with secured guide track ensures high reliability and cutting accuracy.

Application: Wall | Parapet, Ceiling | Staircase | Road barrier.

C. Chain Saw

Precision guide attached chain saw enables efficient, clean square sawing, corner without overcutting.

Application: Square opening | Door opening | Overcut save.

B. Wire Sawing

Very versatile cutting mechanism to cut reinforced concrete with larger crosses sections or thickness.

Application: Column | Beam | Foundations | Precast Girders | Piles | Underwater

D. Multiple Sawing

We are capable of executing multiple diamond sawing and cutting applications broadly known as controlled demolition.

Application: Villa | Process plant | Priority areas | Sea and Air Port | Infrastructure

CUTTING

Electrical | Hydraulic | Hi frequency

Turnkey decommissioning solutions using cutting edge diamond technologies.

C. Groove Cutting

We are well established at floor sawing jobs for productive and cost-effective requirement for a wide range of groove and trench cutting.

Application: Infrastructure | Airport | Civil | Sea Port.

A. Under Water Cutting

Decades of project execution using underwater cutting systems. Steel pipes and concrete pile cutting up to 1200mm ø, unmatched 15meters deep subsea operations.

Application: Port | Subsea | Canals

D. Foundation & Beam Cutting

Diamond wire cutting of any large cross section with reinforced concrete.

Application: Wailer beam | Secant pile | Capping beam | Crane foundation | Diaphragm wall.

B. Bridge Cutting

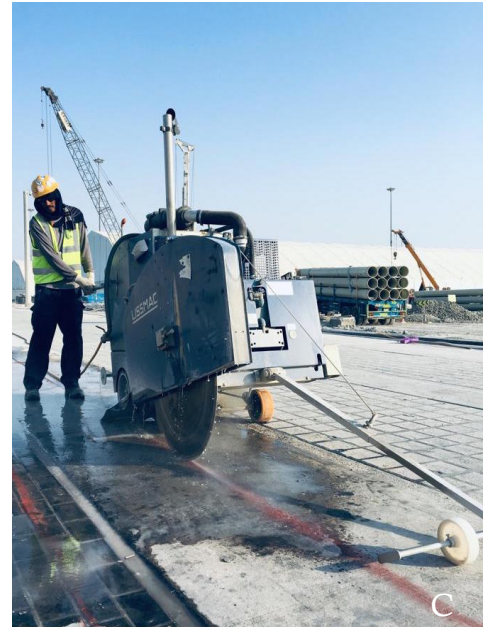
Saw cutting is the most efficient and safest way to demolish bridge components. Corecut Engineering covers all the scope involved in this controlled demolition.

Application: Barrier | Deck slab | Web | Girders | Pier | Abutment.

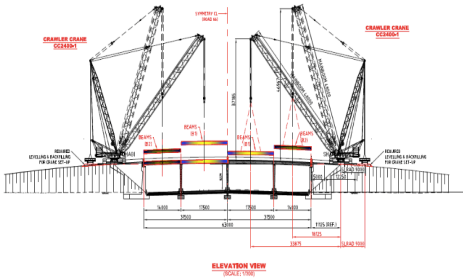
E. Barrier Cutting

Our well-engineered track saw machines in combination with outstanding operational team has mastered in taking up challenges of any volume disregard of time.

Application: Sound barrier | Crash barrier | Curb.

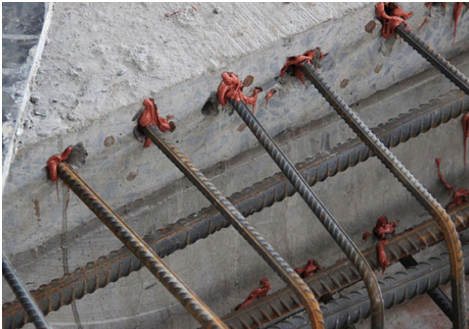


Additional Expertise



Decommissioning projects

We have mastered turnkey bridge removal, partly or entirely depending on the project demand. Our business associates are leaders in lifting and disposal activities.



Rebar Planting

Post rebar installation for rebuilding, modification, strengthening, design corrections and form work simplification. We offer core drilling, chemical injection and rebar planting.



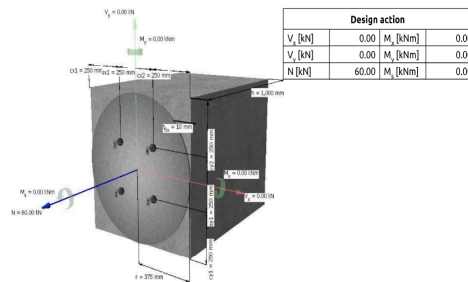
Rebar Scanning

Logical concrete scanning for structural analysis and to locate embedded objects in multiple layers. Up to 300mm depth with an accuracy of ± 10 mm.



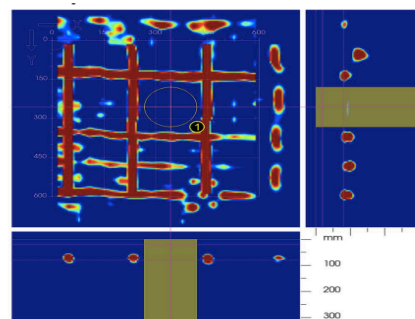
Water Jetting - Hydro Demolition

40,000 Psi powered water is utilized to remove concrete leaving the reinforcement intact. Safeguarding structural strength is the key of this process – Micro level protection.



Chemical Anchoring

Mainly used in installation of structural steel connections, racking, guard rails, retrofitting. We utilize the same technology for concrete lifting with engineering design and load calculations.



Post Tension Scanning

Scanning and location of post tension tendons to safeguard and minimize the risk of hitting during any drilling, sawing, cutting operations.



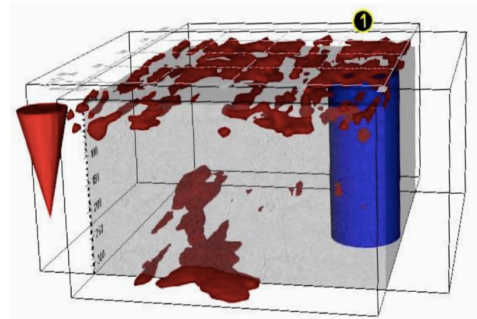
Partial Demolition

Surgical demolition of villas and commercial spaces using the best out of diamond tools and demolition robots. Long track record of experience and happy clients.



Concrete Wall Shaving

Quick, safe & cost effective removal of concrete on wall, ceiling and floor. Automated, dry and dust free operation to ensure health, safety and environmental compliance.



3D Analysis and report

Detailed 3D and 2D analysis report to locate reinforcement, tendons, cables, voids and cavities. Highly recommend for shielding structural and strengthening activities.

Demolition robots

Remote controlled – DXR300

Controlled Demolition

- Confined spaces
- Interiors - Slabs & walls
- Exterior - Several
- Pile breaking
- Foundation breaking
- Shaft sinking

Silent Demolition

- Sensitive zone
- Noiseless or No vibration
- Stair case & Roof crushing

Soft Demolition

- Removal of flooring
- Concrete cover removal
- Block work removal
- Fall ceiling strip out



High knocking force

When used with the SB 302 hammer it has the highest power to weight ratio in its class on the market.



Superb power-to-weight ratio

Compact and powerful in relation to the low weight. Its large footprint enables a high workload.

Tough environments

Efficient in tough environments, like the process industry



Precise positioning

The set-up of the arm system combined with the software gives smooth and precise positioning of the tool.



CORECUT ENGINEERING LLC

Office #5, Oasis Mall Sheikh Zayed Road

P.O. Box 111883, Dubai United Arab Emirates

Tel: +971 (0)4 347 0178

Email: sales@corecut.ae

www.corecut.ae